

# Experience Valby & Sydhavnen

Welcome to Valby and Sydhavnen - two diverse neighbourhoods with strong identities.

Enjoy the village atmosphere at Tingstedet in the heart of Valby. Go for a swim in the harbour in Sluseholmen - one of the new canal towns in Sydhavnen. Enjoy the green bike paths through beautiful urban parks. Bike along the harbour front to enjoy the maritime environment and ride under a power plant to pass 4.5 billion years of evolution in a few minutes. Explore Carlsberg City District with its richness in architecture and art. All routes are child-friendly and suitable for all ages.

Enjoy!

## Sydhavnen

Get on your bike and discover the diverse and maritime neighbourhood Sydhavnen. Sydhavnen is a great mix of old and new, urban spaces and parks. Experience the authentic harbour and beautiful allotment gardens. Explore vast green areas and natural trails, where sheep and alpacas graze freely. Within recent years, most of the former industrial parts of this neighbourhood has transformed into modern and innovative housing districts, where locals use the clean harbour to swim, play and exercise. Sydhavnen is full of surprises and there is room for everyone.

- A Cykelslangen**  
Start the trip at the end of Cykelslangen (The Bicycle Snake) by Bryggebroen. Both bridges are great examples of Copenhagen as a world-class cycling city.
- B Evolution II**  
Though this bike ride only takes a few hours, you can travel through 4.5 billion years of history within just 470 meters of the route. Evolution II is a colourful and thought-provoking work of art on the evolutionary history of humans and earth, displayed on a long stretch of a construction site fence. Behind the fence, you find Enghave Brygge metro station which is currently under construction. The station is expected to open in 2024.
- C Sluseholmen/Bådhusene**  
Sluseholmen was previously a large industrial area. Today, it is a modern maritime community with a total of 8 residential islands with streets named after famous jazz musicians who have played and lived in Copenhagen. Jump into the harbour, rent a kayak or have a seat on one of the many stairs overlooking the harbour. The red boat sheds and the floating clubhouse are all part of Valby Boat Club.  
[Read more about Sluseholmen on the DAC App.](#)
- D Fiskerihavnen**  
Fiskerihavnen is a local maritime community with small boat sheds and self built houses. Small fishing boats head to the sea from here, leaving the smell of paint and stain behind. Neptune and mermaids are full of life at Fiskerihavnen. Continue on the gravel path along the water. A beautiful natural area awaits. Make sure to enjoy the atmosphere at a slow pace, being considerate to the local surroundings.
- E Sydhavnen's Recycling Center**  
Get off your bike and walk around on the roof of a recycling centre whose structure is formed as the number 8, just like an infinity symbol. A visual manifestation of the City of Copenhagen's goal to accelerate the city's circular economy. The building itself, which is made of recycled concrete from the old chimney at Amagerværket, is inspired by a proposal by talented architects at BIG - Bjarke Ingels Group. You can spot your next stop on the route from the roof top - Sydhavnstippen.
- F Sydhavnstippen**  
This green peninsula offers a wealth of experiences in an unrefined natural setting. Sydhavnstippen is a large protected natural area with rare orchids and birds - the kingfisher can even be seen here. Park your bike and go exploring. Perhaps you can even spot a South American alpaca. Bike along the canal - also referred to as 'Lorteren' (shit flow) as the sewers once ended here. You will also see self-built creative housing and small sheds along the way.
- G Karens Minde**  
On the other side of the railway, you will find a troll forest and an animal park. Be prepared to meet a horse or two accompanied by a rider on the path through Troldeskoven - please be considerate. Børnens Dyremark and Kulturhuset Karens Minde, also called 'the red castle', are located on the other side of the forest. If the 120-year-old dance pavilion is open, feel free to show your dancing skills.
- H Garden associations**  
Continue through the part, which many consider 'the old Sydhavnen' with low-rise buildings and green oases. Explore Sydhavnen's charming garden associations. On the way to Mozarts Plads, you find one of the large ones, Høveforeningen Frederikshøj, with colourful houses and gardens. Continue over Mozarts Plads, past Frederiksholm Church, whose front facade functions as a climbing wall, and further past the statue of former Prime Minister Anker Jørgensen.
- I Energiporten**  
There are not many places in the world, where you can ride a bike under a power plant like you can through Energiporten. The iconic H.C. Ørstedsværket is a well-known landmark, not least for an industrial era gone by. The yard is also named a national industrial monument.

- A Cykelslangen**
- B Evolution II**
- C Sluseholmen/Bådhusene**
- D Fiskerihavnen**
- E Sydhavnen's Recycling Center**
- F Sydhavnstippen**
- G Valbyparken**  
Once the wind is seen and heard in the 1 km long avenue with poplar trees leading all the way into Valbyparken, urban surfers get ready to breathe the morning air and throw themselves into the waves. Enjoy the view or go for a swim from the small local beach. Valbyparken is large and diverse. Explore its countless intimate theme gardens and enjoy the scent of more than 12,000 beautiful roses.
- H Valby Nature Playground**  
The massive nature playground in Valbyparken offers activities for children of all ages.  
[Opening hours can be found at \[kk.dk/naturlegepladsen\]\(http://kk.dk/naturlegepladsen\)](#)
- I Valby Hallen/Vandkulturhus**  
Valby Idrætspark offers plenty of activities both outside and inside. Valby Hallen, a sports hall and a highly popular music venue, was decorated with impressive gable art in the summer of 2020. Valby Vandkulturhus is a low-energy public swimming pool, which opened in 2012.  
[Explore the architecture further at DAC App](#)
- J Vestre Kirkegård**  
Being the country's largest burial site, Vestre Kirkegård seems infinitely large. Colloquially, the lake in front of the North Chapel is referred to as 'The Red Sea', as many former social democratic prime ministers are buried here. Other famous Danes such as Tove Ditlevsen, Herman Bang and Liva Weel are also buried at Vestre Kirkegård.
- K Den Gule By**  
You are up for a surprise if you follow the busy Enghavevej through the low tunnel. As in one of the rabbit holes in 'Alice in Wonderland', a completely different world emerges in the form of a time pocket - Den Gule By (The Yellow City) and the newly founded hub for sustainability and gastronomy in nine old wooden barns from 1909, Banegaarden. The yellow houses were originally built for employees at DSB, the country's largest train operating company.

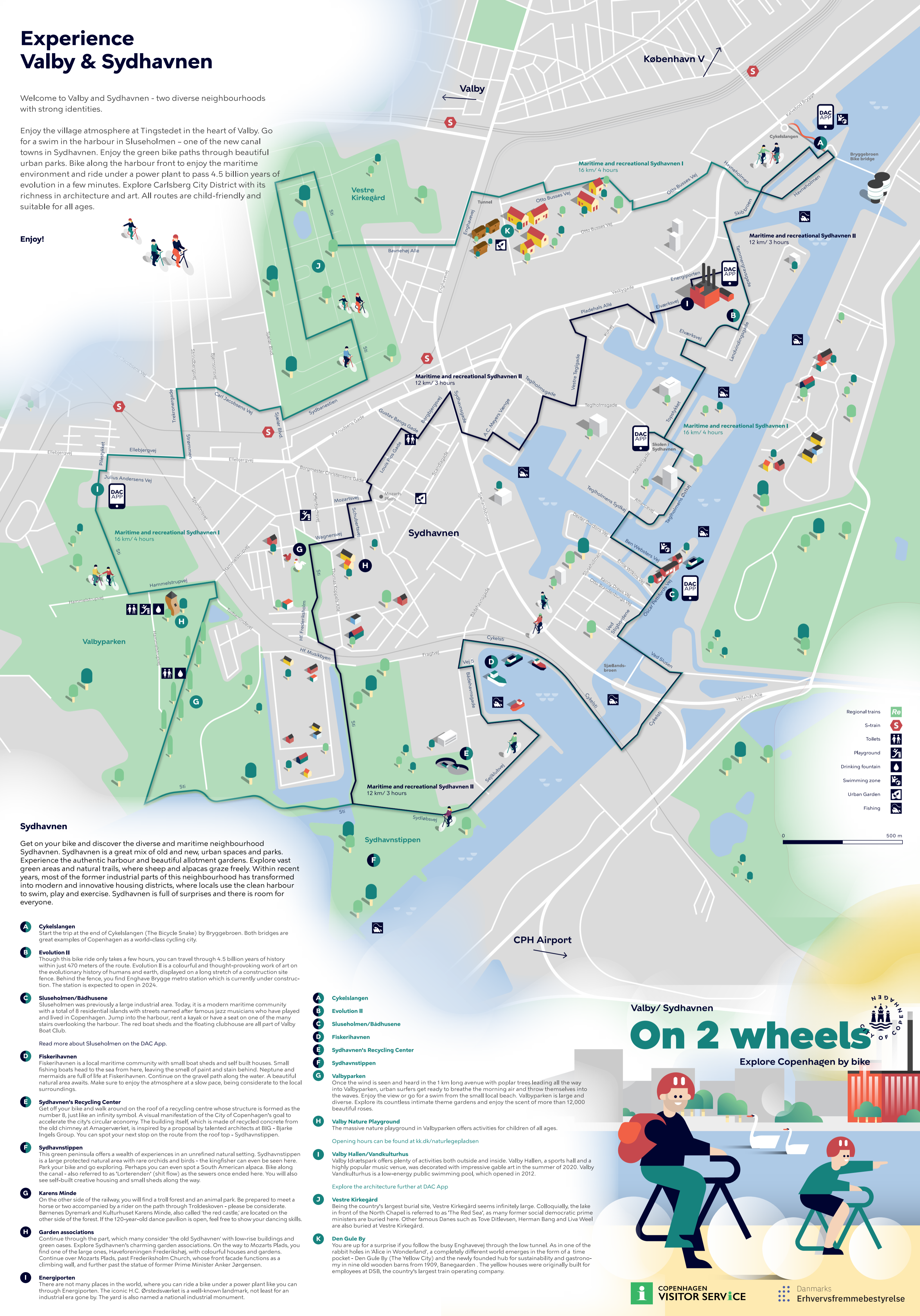
## Valby/ Sydhavnen

# On 2 wheels

Explore Copenhagen by bike



- Regional trains
- S-train
- Toilets
- Playground
- Drinking fountain
- Swimming zone
- Urban Garden
- Fishing





### Know Your Bro

Get off the beaten track and become a temporary local with a digital self-guided walking or cycling tour.



Through text, audio, photographs and video-clips, the Know Your Bro tours offer an authentic twist to your Copenhagen stay with unique insights into Copenhagen localhood, history and culture.

[www.knowyourbro.dk](http://www.knowyourbro.dk)



### DAC App

The Danish Architecture Center's free app puts the city's best contemporary design in your hand. Click on the map in the app and see all the highlights near you. Or put the app on "explore mode" and receive notifications when you pass interesting architecture in the city. DAC App is an essential tool for exploring world-class architecture in Copenhagen.



### Bring your bike on public transport

You can bring your bike on trains, metro and harbour buses. You are required to buy a ticket for your bike when you bring it on public transport. It is free to bring a bike with you on S-trains and harbour buses. Please note that certain restrictions apply during rush hour.



### The Harbour Circle (Havneringen)

The Harbour Circle (Havneringen) is a 13 km signposted cycling and walking route along the Copenhagen Harbour. On the route from Nyhavn to Slusen you will ride many of the new bike and pedestrian bridges crossing the harbour.



### Looking for leisure activities?

Copenhagen is a vibrant city with a wide range of culture and leisure activities that are only waiting for you to join.

Curious about Copenhagen liveability and cultural life? Just moved to Copenhagen? Looking for leisure activities?

Find inspiration at [international.kk.dk](http://international.kk.dk)

### Transforming Carlsberg

Welcome to Carlsberg City District, which was once the brewery grounds for Carlsberg. Being one of Copenhagen's newest neighbourhoods, Carlsberg City District is developing rapidly with new urban spaces, recreational and residential areas. Get close to the historic industrial buildings and experience the Carlsberg family's passion for architecture and art. Pat the granite elephant trunks, enjoy a quiet moment in J. C. Jacobsen's romantic garden among exotic trees and explore the old residential area located behind the district.

**Carlsberg City District is almost car free, but please note that it is still a construction site with many trucks. Pay attention and bike carefully!**

- A Enghaveparken**  
The route starts in the newly renovated Enghaveparken. Get off the bike and wheel through the park, which is the only green breathing space for locals in Vesterbro. The park underwent a major renovation focusing on climate adaptation in 2019. Skaters, football and basketball players run around in massive basins used to collect rainwater in the event of cloudbursts. Ingenious drainages are tempting for children who like playing in puddles.
- B Humleby**  
You can read more about these terraced houses and gain insight into the Danish labour history on Know Your Bro and DAC App.
- C Købkes Plads and Thorvald Bindsbølls Plads**  
An outdoor amphitheatre provides the setting for one of the largest public squares in Carlsberg City District - Købkes Plads. Have a cup of coffee in the sun and enjoy the urban vibe surrounding you. Cross Thorvald Bindsbølls Plads and walk around Halmlageret (Danish for 'straw storage house') with your bike. You can engage in various recreational activities in this area.
- D Søndermarken**  
Have a stroll in the beautiful park of Søndermarken - or simply enjoy the view from the entrance towards Frederiksberg Palace, which houses the Royal Danish Defence College today.
- E Jesuskirken**  
This distinctive church, where the tower is separated from the church itself, is one of the country's busiest with frequent baptisms and wedding ceremonies taking place. It is built as a mausoleum for famous brewer Carl Jacobsen and his family. The church tower is built in memory of Carl Jacobsen's eldest son Alf, who died only 9 years old. If it is open, go and have a look inside.
- F Carlsbergviadukten**  
From this beautiful old bridge crossing the rails, you get a great view of the city's rapid growth. The bridge takes you to the largest cemetery in Denmark - Vestre Kirkegaard.
- G Bryggernes Plads**  
Bryggernes Plads is considered the city hall square of Carlsberg City District. Have a seat on one of the many stairs and enjoy the surroundings consisting of both modern and old architecture.
- H The Elephant Gate**  
Learn more about the iconic landmark, the Elephant Gate, on the DAC App
- I J.C. Jacobsen's Garden**  
This garden opened to the public in 2008. The red brick building with curvy shells is named De Hængende Haver (The Hanging Gardens). The function of the shells was to make sure daylight could enter the bottling without the private garden being exposed to the workers. Today, the building is part of Copenhagen University College. Opposite De Hængende Haver, you find the former home of the famous Danish physicist Niels Bohr, who lived there for 31 years until his death in 1962.  
  
You can read more about academic housing on the DAC App.
- J Bohr's Tower**  
On sunny days, this part of the route oozes of street sports, skaters, basketball, parkour and romance on the benches.  
  
You can read more about Bohr's Tower on the DAC App.



## Safety first!

With more than **375 km** of bike lanes to explore, Copenhagen is best experienced on two wheels. Make sure to read the following tips from us to you before exploring.

Though a helmet is not required by law, it is highly recommended.

- 1.** A regular bike is designed for one rider only.
- 2.** Always keep right - except when passing - and don't bike on pavements and pedestrian crossings.
- 3.** Raise your hand to signal a stop. Signal right or left before turning.
- 4.** Don't forget your lights. They are required by law from dusk to dawn.

### Charming Valby

Welcome to charming Valby - the village within the city. Explore old Valby with its characteristic yellow houses, green oases and public spaces. Shop, eat and hang out with locals. Bike through residential areas along magical fruit trees and local stalls. Explore new parts of the neighbourhood and experience charming streets and unique housing built specifically for the city's workers around the 1900s to improve their housing conditions.

- A Carlsbergviadukten**  
From this beautiful old bridge crossing the rails, you get a great view of the city's rapid growth. The bridge takes you to the largest cemetery in Denmark - Vestre Kirkegaard.
- B Jesuskirken**  
This distinctive church, where the tower is separated from the church itself, is one of the country's busiest with frequent baptisms and wedding ceremonies taking place. It is built as a mausoleum for the famous brewer Carl Jacobsen and his family. The church tower is built in memory of Carl Jacobsen's eldest son Alf, who died only 9 years old. If it is open, go and have a look inside.
- C Nordisk Film and Valby Gadekøer**  
Turn in from Valby Langgade by the supermarket car park and follow Asta Nielsen Strædet. The street runs along Nordisk Film, Denmark's oldest film company. A world leader in the silent movie era and home to great Danish classics and TV productions. Enjoy the green urban garden in Valby Gadekøer and make sure to look up at the gable, where Morten Søndergaard's artwork "Drømmegavlen" from 2015 lights up when darkness falls.
- D Valby Tingsted**  
Valby Tingsted has always been the heart of Valby, providing a good impression of the neighbourhood and its local business life. With the modern shopping centre, Spindieriet, and Valby Library just around the corner, you can feel the history, development and the city's current pulse. On the way to Aksel Sandemose Plads you pass Valby Skole, built in the unique remains of an old porcelain factory.  
  
You can read more about Valby Skole on the DAC App.
- E Aksel Sandemose Plads**  
Take a rest by the square under the elevated railway, where the big city meets the local village. Take a look around. A swap station, train station, pub, light art and suburban streets. From this exact spot you get it all.
- F Den Hvide By**  
Drive through Den Hvide By (The White City) in Valby. The white houses with red roofs and brick ornaments are great examples of housing association homes that gave workers the opportunity to move to the countryside, as Valby was considered during the 1900s. Continue through the pedestrian and bicycle path to Monrads Allé. There is one hedge in particular that stands out among all the stunning gardens. Can you spot the elephants?
- G Lyset and Valby Vænge**  
Once under the railway bridges, you have the chance to take a closer look at the diverse street art. The colourful art is followed by yet another colourful experience on the route in the form of colourful housing association homes behind lush and green gardens in "Lyset", a traditional homeowners' association. The houses in "Valby Vænge", also a local association, are built from recycled materials, including materials from the city's former central station.
- H Grøntorvet**  
Stop at the highest point on Retortvej. On one side, you find the city's newest park - Kulbaneparken. The park is established on top of a new high-speed line to Ringsted. Valby Gasworks, which exploded in 1964, was once located here. On the other side, you find an up-and-coming part of Valby in the former vibrant vegetable and flower wholesale market area, Grøntorvet.  
  
You can read more about this area on the DAC App.
- I Valby Culture House**  
The route from Grøntorvet's new buildings passes an old yet beautifully renovated industrial area, ending at Valby Culture House.

Scan for bike route navigation



Be safe and enjoy the ride.



PurePrint™ by KLS  
Produced in cooperation with KLS PurePrint AG